

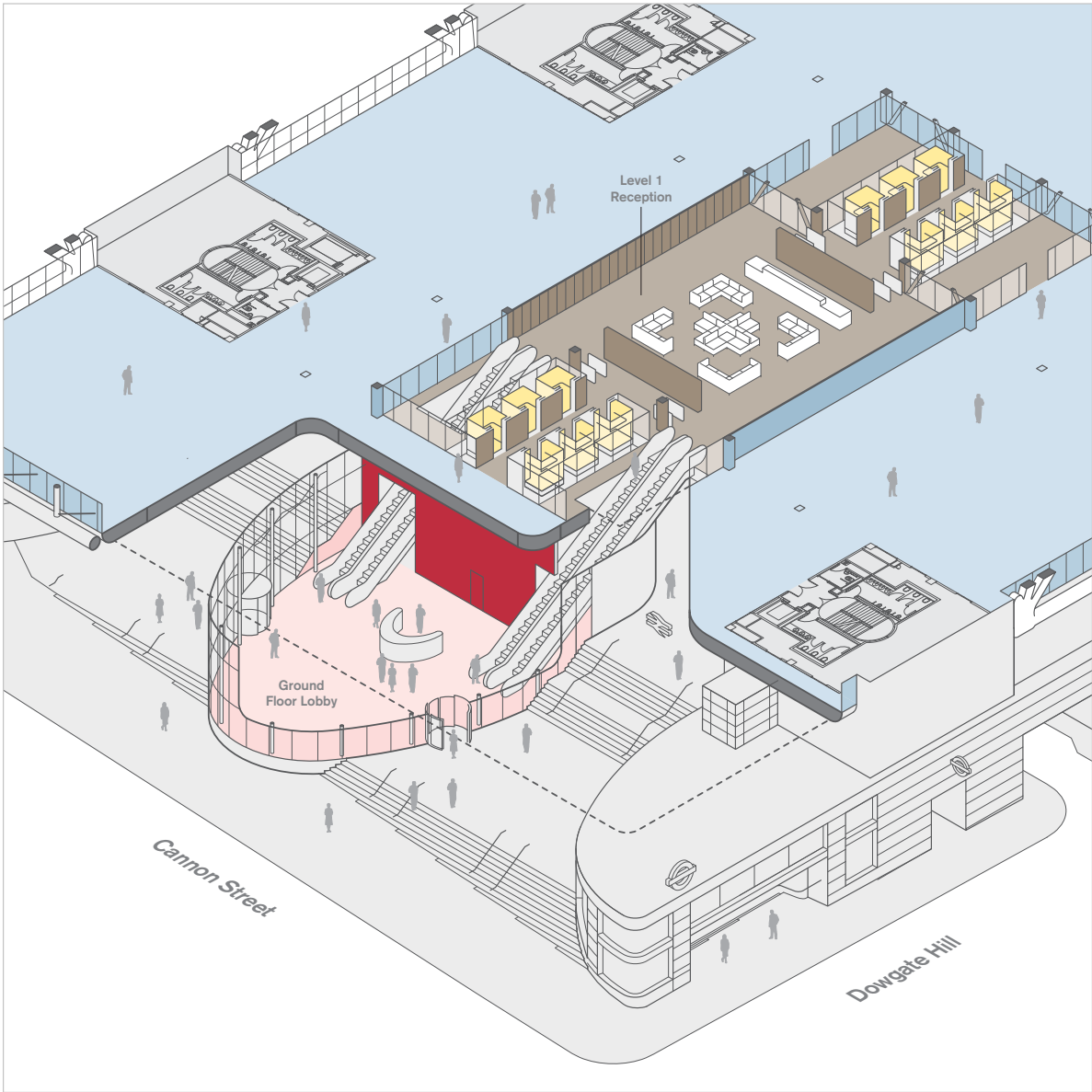


**CANNON PLACE**  
ENGINEERED FOR BUSINESS

# SCHEDULE OF FLOOR AREAS

	SQ FT	SQ M
<b>LEVEL 8</b> (THREADNEEDLE INVESTMENTS)		<b>LET</b>
<b>LEVEL 7</b> (THREADNEEDLE INVESTMENTS)		<b>LET</b>
<b>LEVEL 7</b>	<b>34,448</b>	<b>3,200</b>
<b>LEVEL 6</b>	<b>49,751</b>	<b>4,622</b>
<b>LEVEL 5</b>	<b>15,693</b>	<b>1,458</b>
<b>LEVEL 5</b> (FRANKLIN TEMPLETON INVESTMENTS)		<b>LET</b>
<b>LEVEL 4</b> (i2OFFICE)		<b>LET</b>
<b>LEVEL 4</b> (CBI)		<b>LET</b>
<b>LEVEL 3</b> (CMS CAMERON MCKENNA)		<b>LET</b>
<b>LEVEL 2</b> (CMS CAMERON MCKENNA)		<b>LET</b>
<b>LEVEL 1</b> (CMS CAMERON MCKENNA)		<b>LET</b>
<b>TOTAL AVAILABLE</b>	<b>99,892</b>	<b>9,280</b>
<b>STORAGE AVAILABLE</b>	<b>4,328</b>	<b>402</b>

# GROUND FLOOR/ENTRANCE

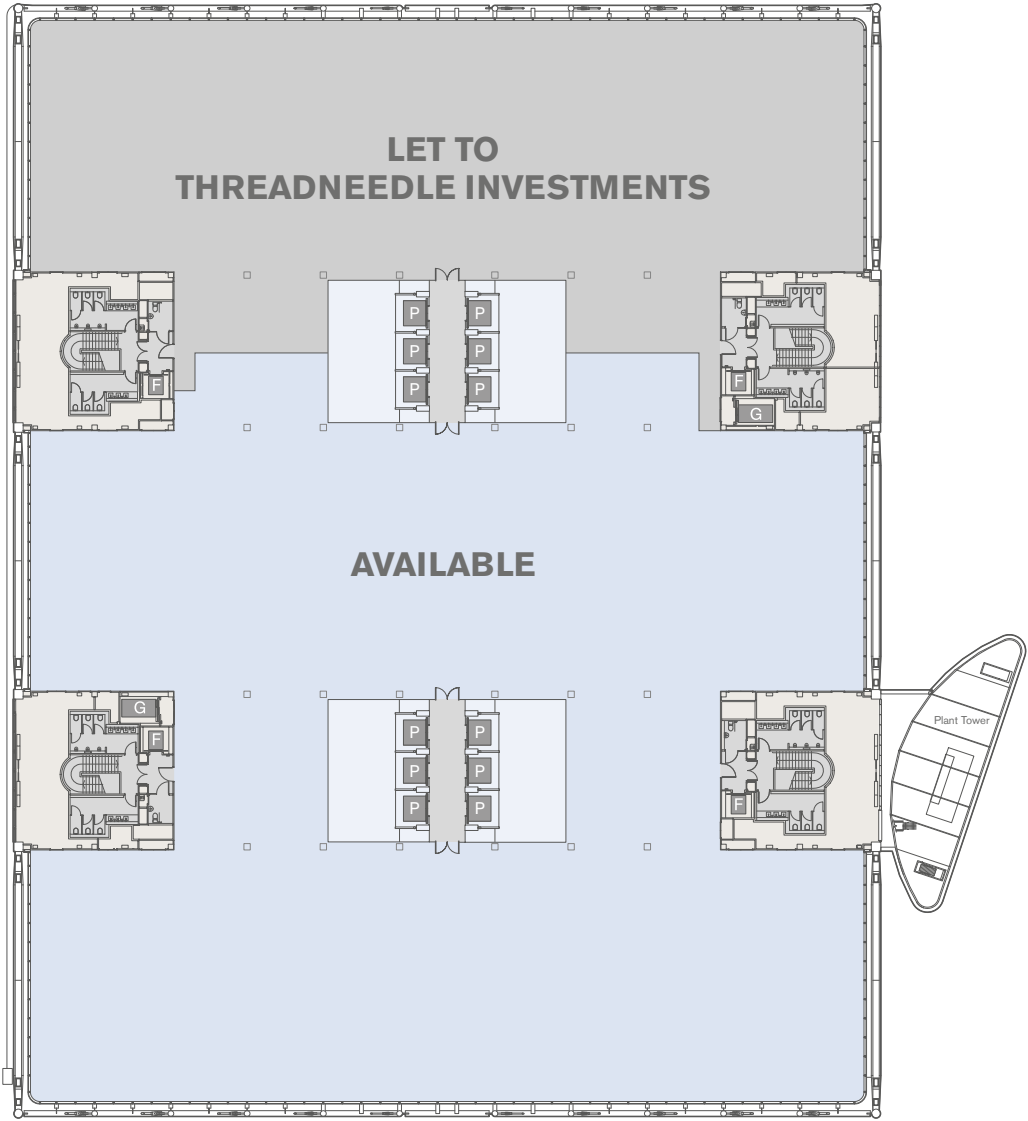


# LEVEL 7 DIVIDED

AVAILABLE 34,448 SQ FT (3,200 SQ M)



CANNON ST

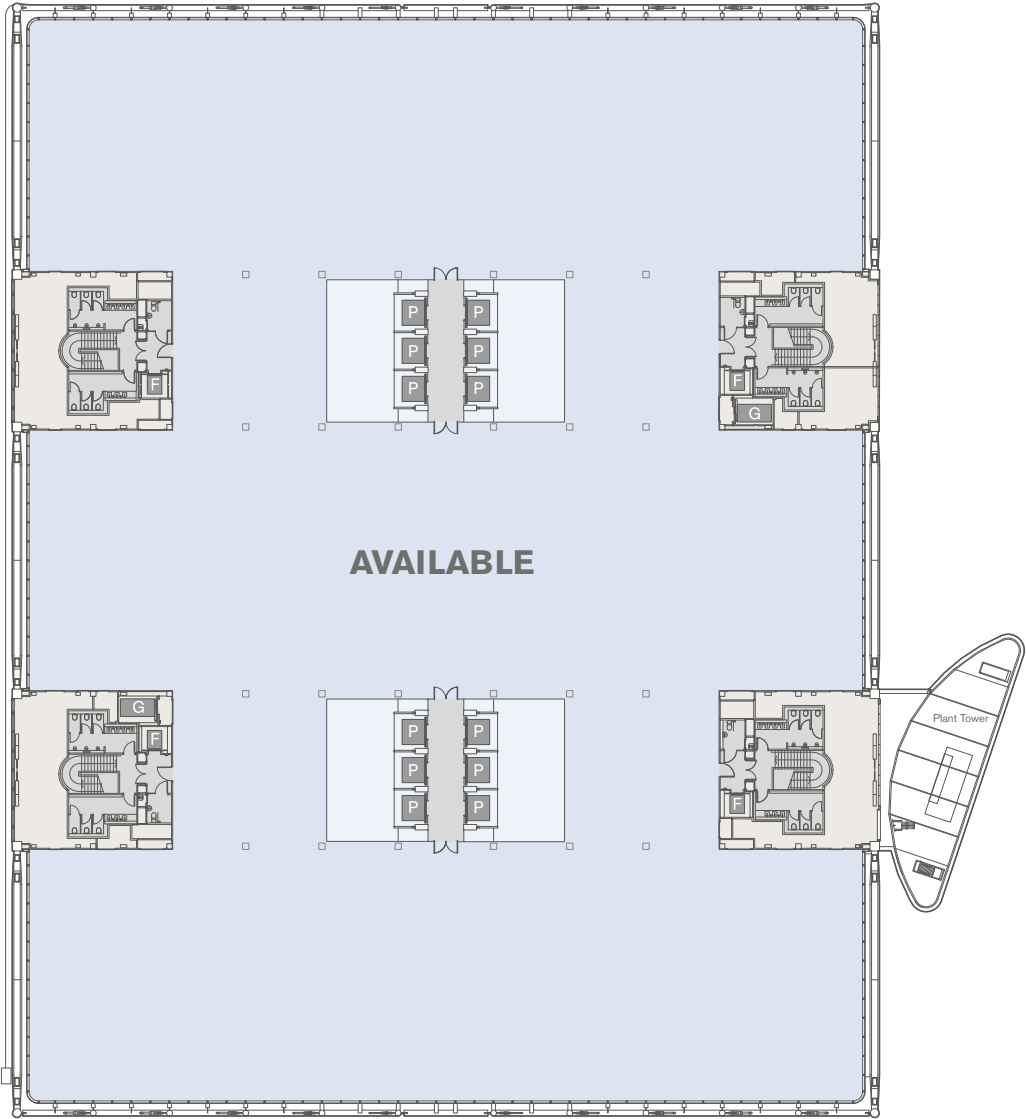


# LEVEL 6

49,751 SQ FT (4,622 SQ M)



CANNON ST

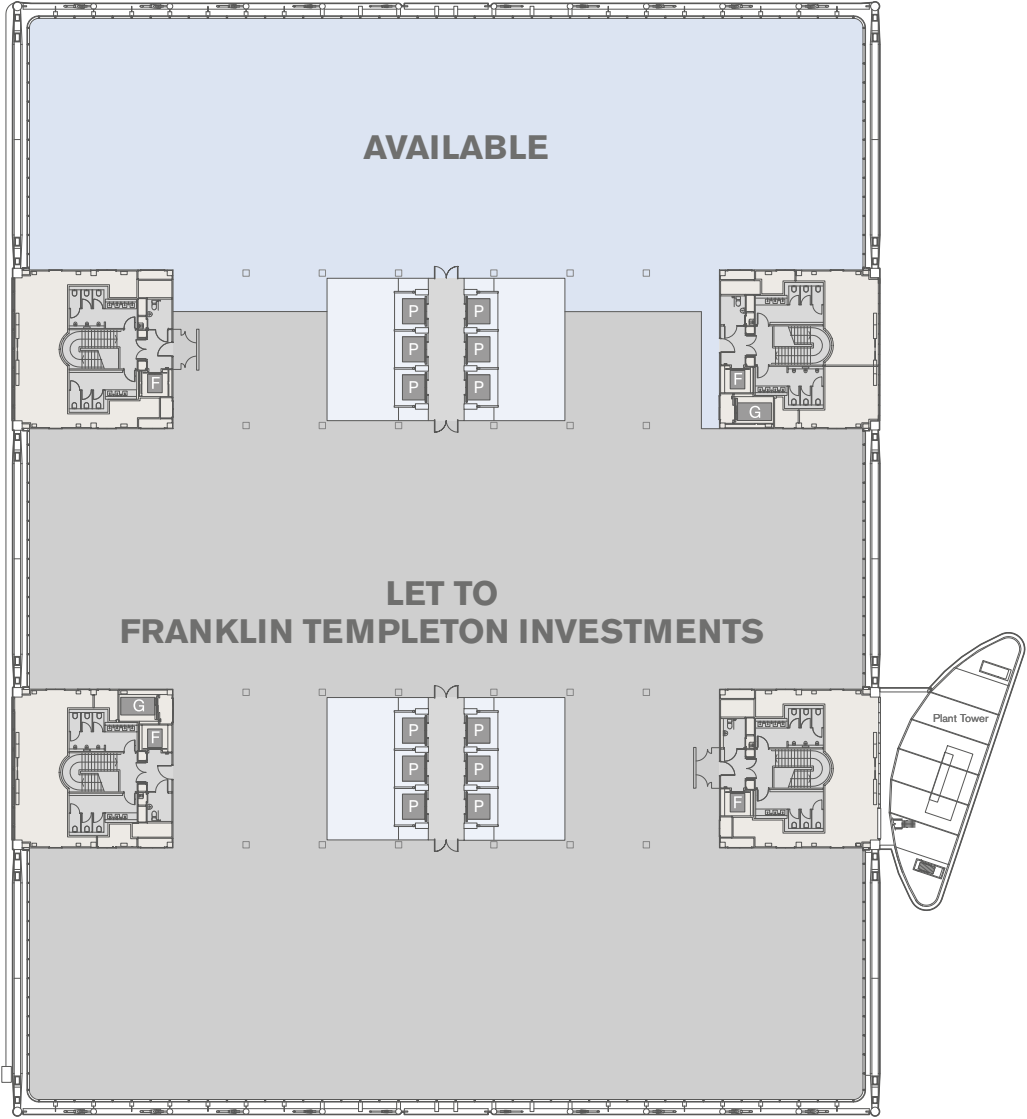


# LEVEL 5 DIVIDED

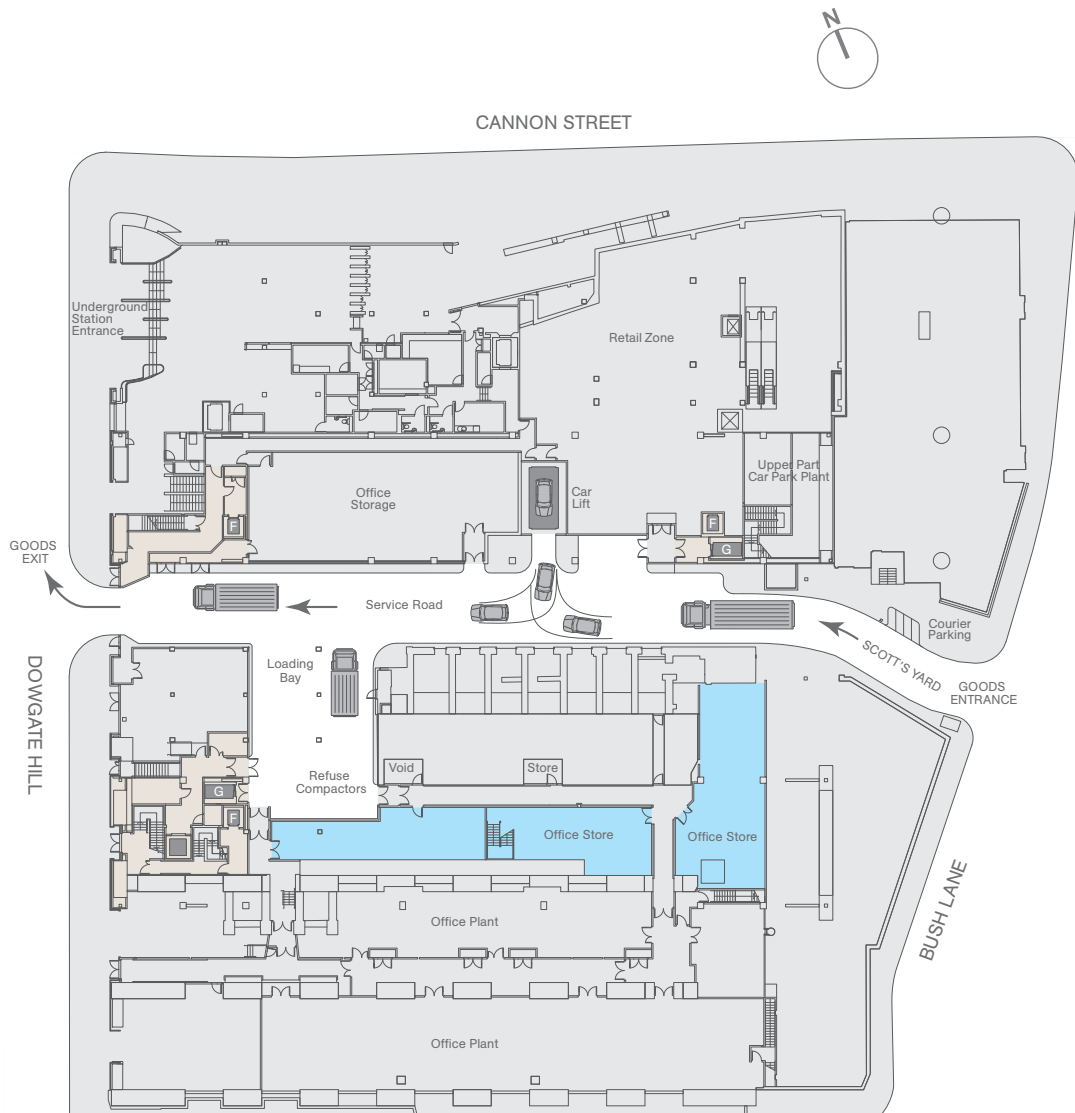
AVAILABLE 15,693 SQ FT (1,458 SQ M)



CANNON ST



# LOWER GROUND

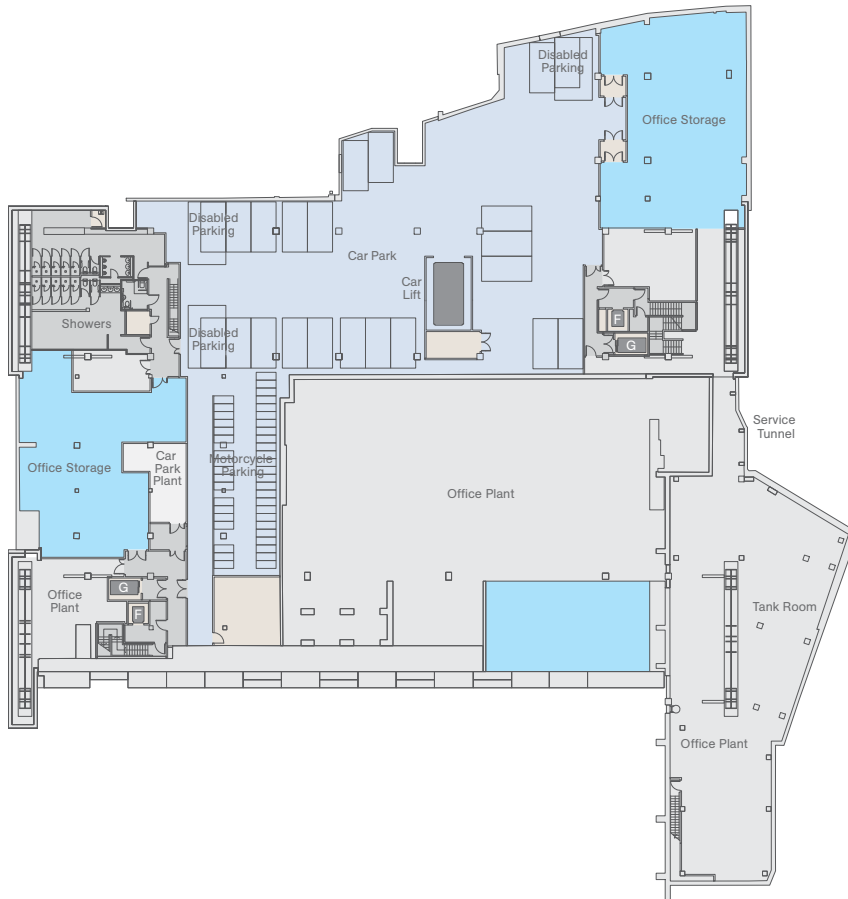


Cannon Place benefits from a dedicated on site management team, who utilise the latest technology to enhance the experience of the Cannon Place occupiers.

Services on site include a full security team, technical services experts and housekeeping operatives.

Led by the General Manager, the on site team is on hand 24/7 to ensure common services throughout the building are provided to the highest possible standards at all times.

# BASEMENT LEVEL



## ONSITE FACILITIES:

- 16 CAR SPACES
- 69 MOTORCYCLE SPACES
- 204 BICYCLE SPACES
- 5 MALE AND 5 FEMALE SHOWERS
- 1 UNISEX DISABLED SHOWER
- 74 MALE LOCKERS
- 80 FEMALE LOCKERS



**Mark Slim**

D +44 (0)20 7182 3788  
E mark.slim@cbre.com

**James Walker**

D +44 (0)20 7182 3216  
E james.walker@cbre.com

**Anna Biggin**

D +44 (0)20 7182 3352  
E anna.biggin@cbre.com

**Peter Thursfield**

D +44 (0)20 7409 8928  
E pthursfield@savills.com

**Stuart Lawson**

D +44 (0)20 7409 8920  
E slawson@savills.com

**Will Butler**

D +44 (0)20 7409 8831  
E wbutler@savills.com

**WWW.CANNONPLACE.CO.UK**

---

**MISREPRESENTATION**

- We provide the information contained in these particulars for guidance to intending purchasers, licensees or any other third parties and they are for general information only and will be used at your own risk.
- We will use all reasonable endeavours to ensure the accuracy of information, however, we do not guarantee the accuracy or completeness, factual correctness or reliability of any information in the particulars (especially as the information may have been obtained from third parties) and do not accept any liability for any errors or omissions including any inaccuracies or typographical errors.
- Any interested purchasers, licensees or any other third parties should not view the information in the particulars as statements or representations of fact and should satisfy themselves that the facts and specific details in the particulars are correct and accurate especially in relation to floor areas and other measurements through inspection or other means, as appropriate, and will be responsible for taking independent surveyors or valuation advice before entering into any legally binding transaction in respect of the property or premises that is the subject matter of these particulars.
- We have not made any investigations or otherwise of any issues concerning pollution and potential land, building, air or water contamination. Prospective purchasers, licensees or any other third parties must undertake their own enquiries and satisfy themselves in this regard.
- Unless otherwise stated, all prices and rents are quoted exclusive of VAT. Designed by Wordsearch. January 2015.